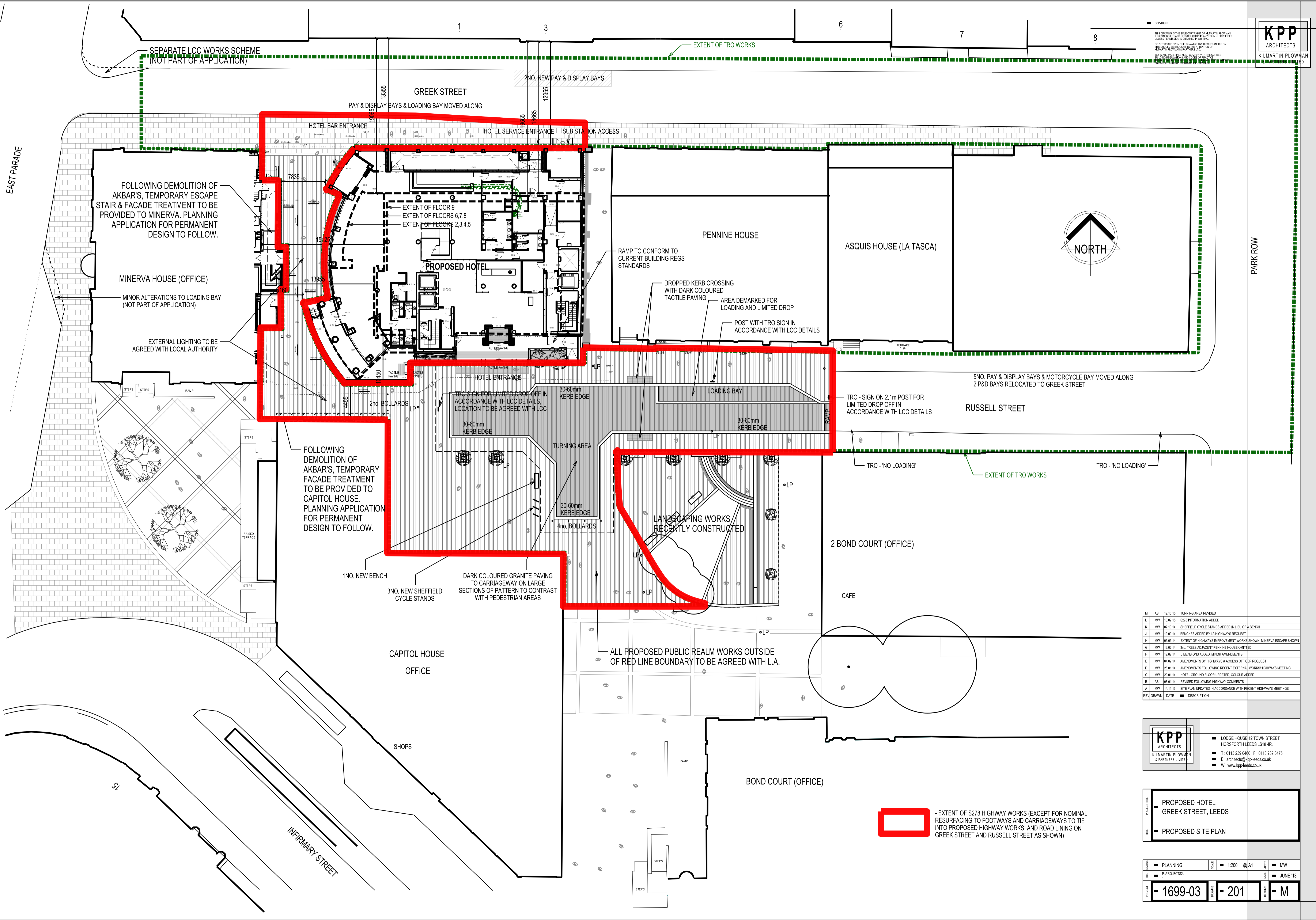


THIS DRAWING IS THE SOLE COPYRIGHT OF KILMARTIN PLOWMAN & PARTNERS LTD AND IS NOT TO BE REPRODUCED OR TRANSMITTED IN ANY FORM OR BY ANY MEANS, ELECTRONIC OR MECHANICAL, INCLUDING PHOTOCOPYING, RECORDING, OR BY ANY INFORMATION STORAGE AND RETRIEVAL SYSTEM, WITHOUT THE WRITTEN PERMISSION OF KILMARTIN PLOWMAN & PARTNERS LIMITED.



SEPARATE LCC WORKS SCHEME (NOT PART OF APPLICATION)

EXTENT OF TRO WORKS



RUSSELL STREET

TRO - 'NO LOADING'

EXTENT OF TRO WORKS

TRO - 'NO LOADING'

ALL PROPOSED PUBLIC REALM WORKS OUTSIDE OF RED LINE BOUNDARY TO BE AGREED WITH L.A.

- EXTENT OF S278 HIGHWAY WORKS (EXCEPT FOR NOMINAL RESURFACING TO FOOTWAYS AND CARRIAGEWAYS TO TIE INTO PROPOSED HIGHWAY WORKS, AND ROAD LINING ON GREEK STREET AND RUSSELL STREET AS SHOWN)

REV	DATE	DESCRIPTION
M	AS 12.10.15	TURNING AREA REVISED
L	MW 13.02.15	S278 INFORMATION ADDED
K	MW 07.10.14	SHEFFIELD CYCLE STANDS ADDED IN LIEU OF A BENCH
J	MW 19.05.14	BENCHES ADDED BY LA HIGHWAYS REQUEST
H	MW 03.05.14	EXTENT OF HIGHWAYS IMPROVEMENT WORKS SHOWN, MINERVA ESCAPE SHOWN
G	MW 13.02.14	3no TREES ADJACENT PENNINE HOUSE OMITTED
F	MW 12.02.14	DIMENSIONS ADDED, MINOR AMENDMENTS
E	MW 04.02.14	AMENDMENTS BY HIGHWAYS & ACCESS OFFICER REQUEST
D	MW 28.01.14	AMENDMENTS FOLLOWING RECENT EXTERNAL WORKS/HIGHWAYS MEETING
C	MW 20.01.14	HOTEL GROUND FLOOR UPDATED, COLOUR ADDED
B	AS 08.01.14	REVISED FOLLOWING HIGHWAY COMMENTS
A	MW 14.11.13	SITE PLAN UPDATED IN ACCORDANCE WITH RECENT HIGHWAYS MEETINGS

KPP
ARCHITECTS
KILMARTIN PLOWMAN & PARTNERS LIMITED

■ LODGE HOUSE 12 TOWN STREET
 HORSFORTH LEEDS LS18 4RJ
 ■ T: 0113 239 0460 F: 0113 239 0475
 ■ E: architects@kpp-leeds.co.uk
 ■ W: www.kpp-leeds.co.uk

PROJECT TITLE: **PROPOSED HOTEL GREEK STREET, LEEDS**

TITLE: **PROPOSED SITE PLAN**

FILE STATUS	SCALE	DATE	BY
■ PLANNING	■ 1:200 @A1	■ MW	
■ P/PROJECTS2		■ MW	
PROJECT: - 1699-03	DRAWING: - 201	DATE: - M	